

Dassault Aviation

The Dassault Aviation industrial campus in Mérignac is expanding to accommodate a new research centre.

CLIENT

Dassault

TEAM

Patriarche (Architecture, Interior Architecture, MEP Engineering, EBQ, Cost, BIM, Landscape, Signage) Partners:

Tecta, Cuisinorme, IdB, Félix & Associés, CMA
Credits: © Romuald Nicolas and © Anaël Barrière

KEYPOINTS

Command centre.
Staff restaurant.
Production centre.
Modular office space.
Virtual Reality Centre.
Immersive Reality Centre.
Auditorium.

SUSTAINABILITY

Landscape integrated into the project.
RT 2012 -20%.
Maximum use of the building's thermal inertia.
Free cooling of the atrium.
Solar panels on the multi-storey car park.

As part of its "Leading our Future" transformation plan launched in 2016 by the aircraft manufacturer, Dassault Aviation's Industrial Campus in Mérignac is being expanded to accommodate a new design, development and after-sales support centre for civil and defence activities.

This ambitious project aims to bring together onto one site all the teams working on an aircraft—from its design through to production and after-sales support. It is part of a redevelopment of the entire site, both in terms of landscape and functionality.

The existing landscaped park has been redesigned to connect the site's new facilities, which include a larger company restaurant, a 750-space multi-storey car park, and a building with changing rooms and bicycle parking facilities. The park is a place for relaxation, but also for informal meetings that contribute to the "well-being at work" of employees. Connected to the north of the site, a short distance from the historic hangars where the Rafale and Falcon aircraft are still being built, the new premises cover nearly 26,000 square metres over four levels, with 1,500 workstations divided into 24 collaborative work spaces.



Typology
Offices, R&D & Laboratory

Construction cost
60 M€

Status
Delivered in 2021

Surface area
25 800 m²

Location
Mérignac, France

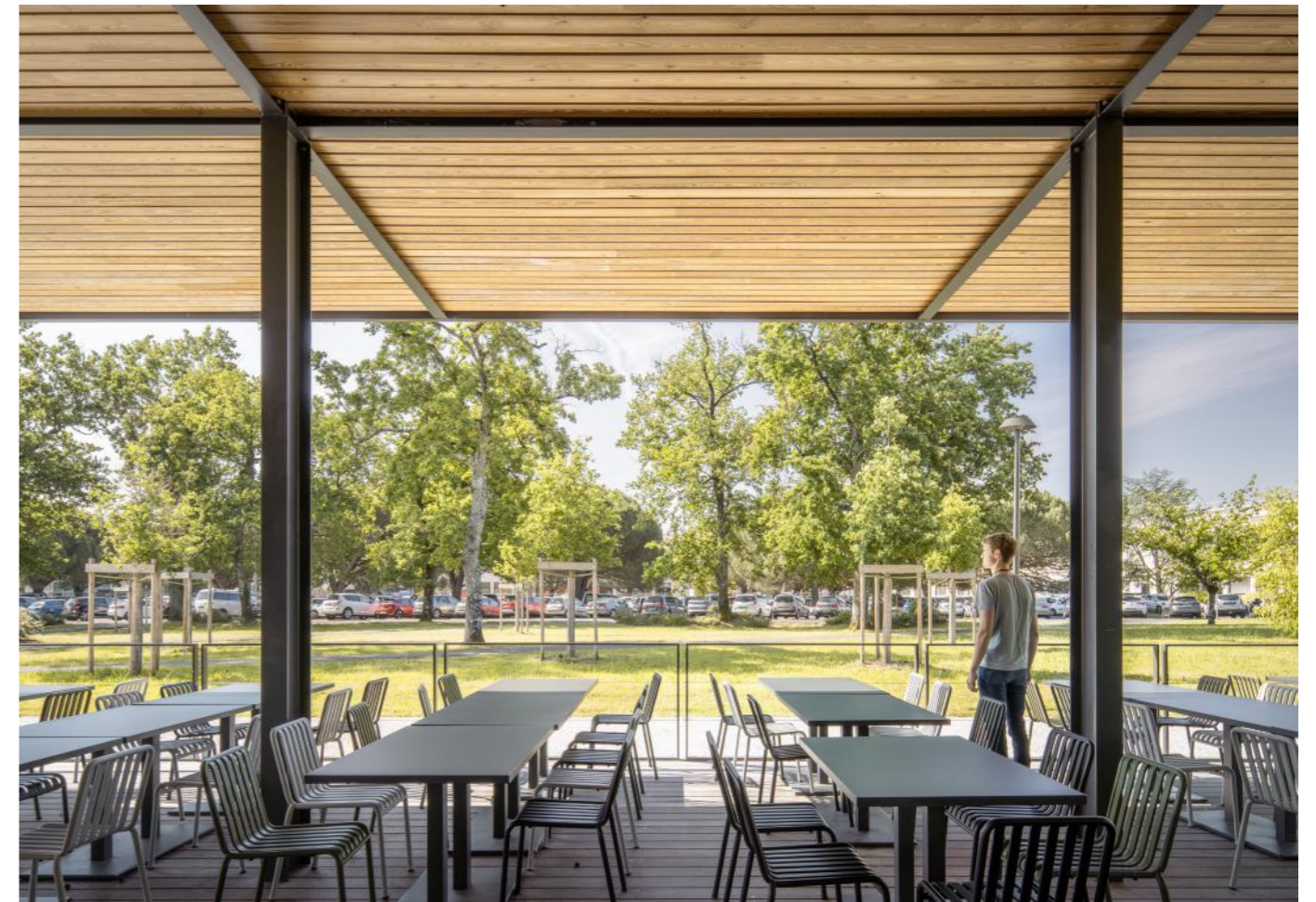
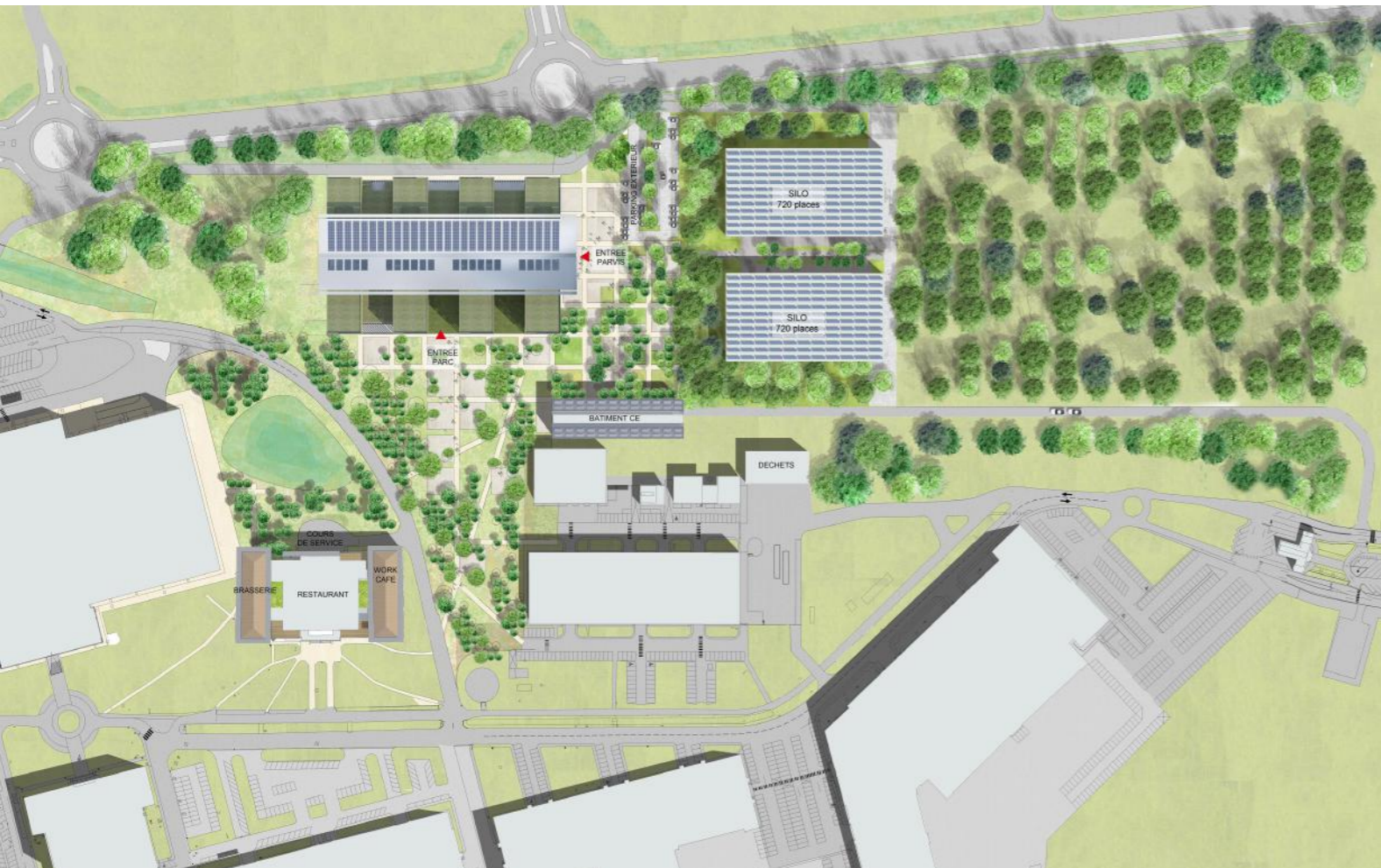
Allocation mode
Private project management

Intentions

The elements of the programme, organised around a landscaped park, are evolving. A vast forecourt welcomes and connects the various pedestrian flows that enter the building or the heart of the campus. Based on the model of the Aquitaine forests, made up of pine trees, we proposed a plan based on an 18-metre grid.

This virtual "grid" is spread out over the whole of our intervention zone, and governs the landscape and plantations as well as the office building, the parking spaces and the social and restaurant areas. It allows the new building to be sewn into the existing site for complete integration.

Prioritise density to make room for a large landscaped park.



Flexible spaces around a central street

A simple organisation around a central street, a place for exhibitions, information, events and exchanges.

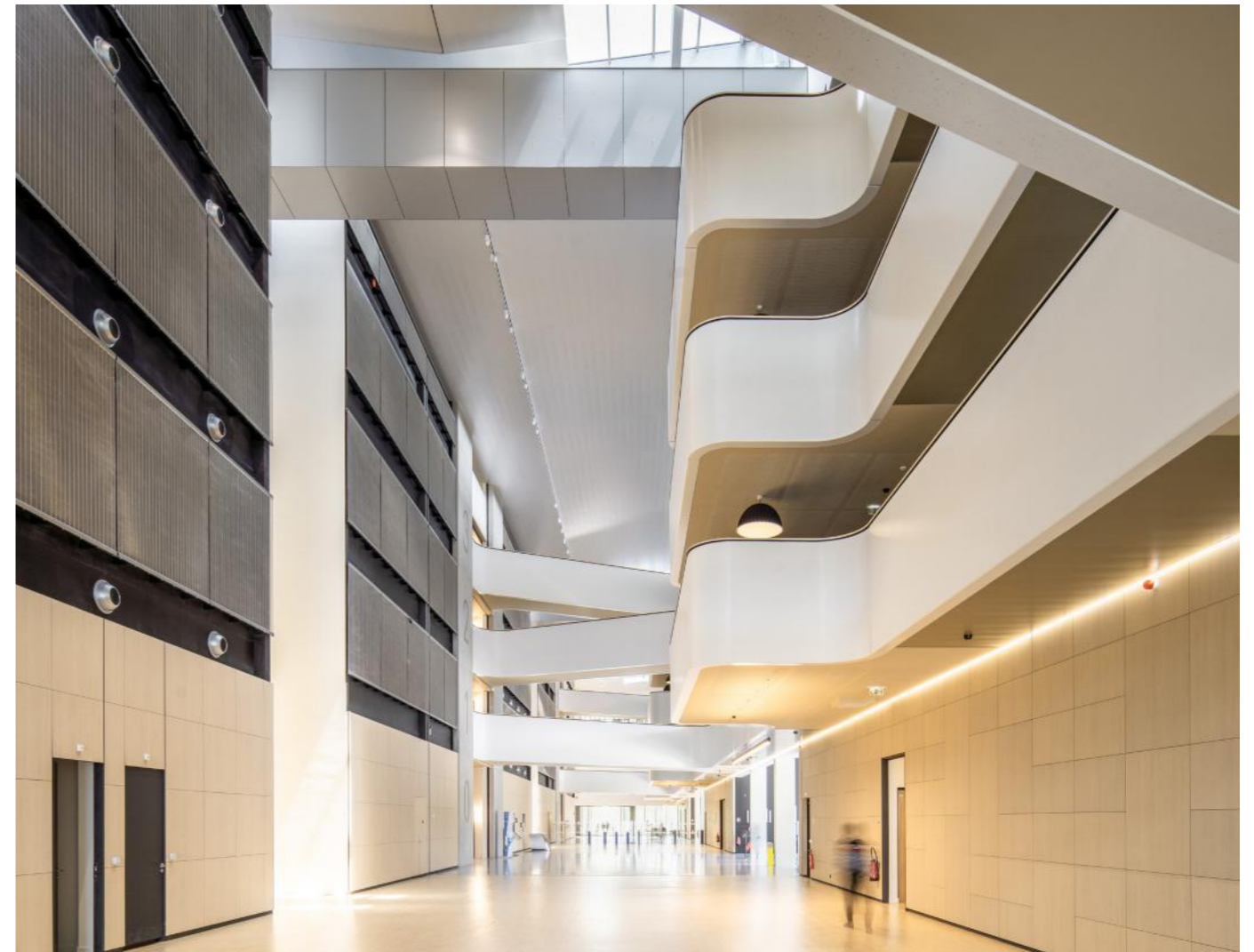
Inside, a street almost 130m long and 18m wide, crossing the building from east to west, is the backbone of the building. This space for exhibitions, information, events and exchanges distributes the various spaces arranged on either side like wings on the fuselage of an airplane.

On the south side of the ground floor, spaces open onto the park accommodate meeting rooms, VIP areas and a Command Center accessible via a service courtyard.

On the north side, more enclosed spaces include :

- **the conference room**, an amphitheatre with an elegant ambience that can be used outside the secure enclosure if required.
- **the test benches**, grouped into two sub-assemblies and served by dedicated corridors to separate military and civilian flows.
- **the data center**, also located on this side of the building, sealed off from outside view.

On the upper floors, the street connects the office spaces via a series of walkways. All curved, they contrast with the rigor of the exterior lines.



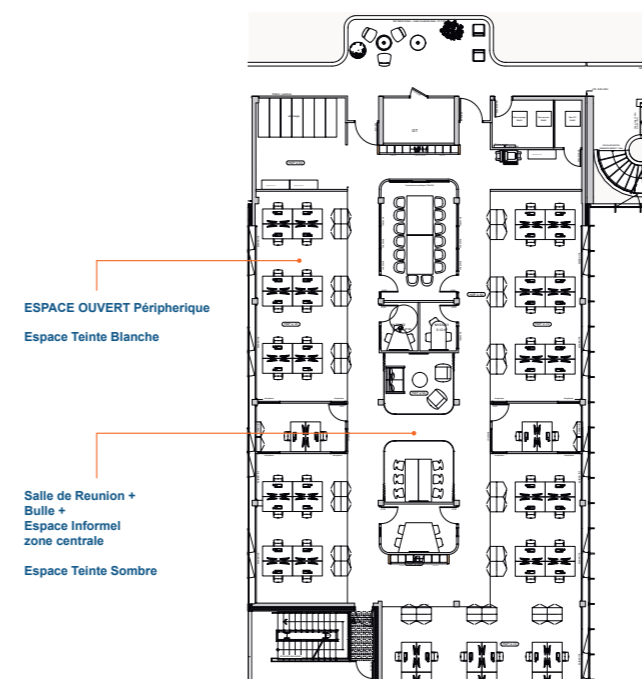
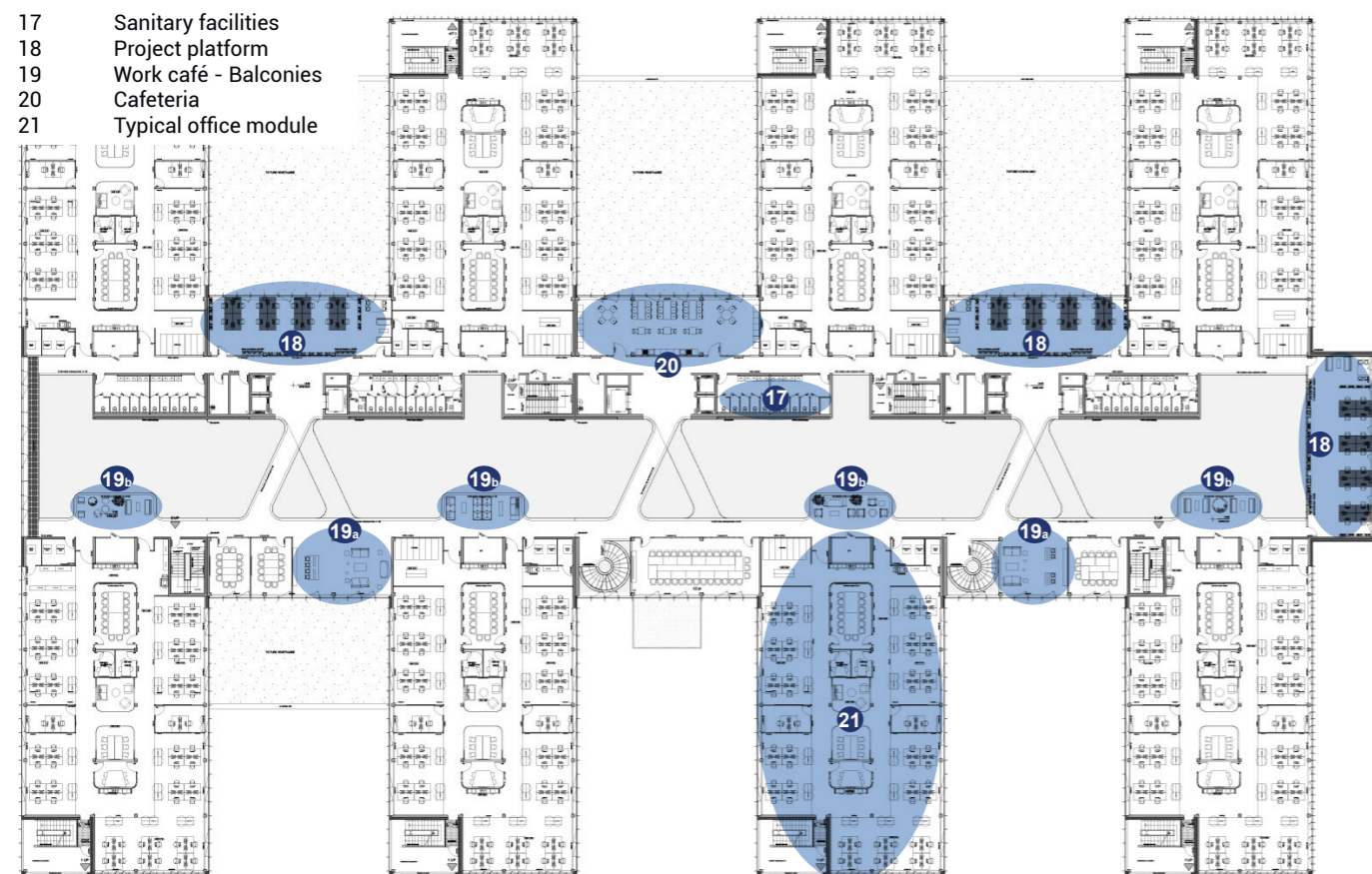
Focus space planning - Workspaces

The 500m² workspaces are located on either side of the interior street, in a bright and pleasant atmosphere thanks to natural light from the roof, and to the south-facing patios overlooking the center of the campus and the airplanes.

On the street side, the corridors widen out from time to time to create floor lounges, informal spaces that encourage exchanges between employees.

On the patio side and on each level, there are modular spaces that allow teams working on the same project to gather in a dedicated area.

A bright, pleasant atmosphere for functional office spaces that encourage interaction.

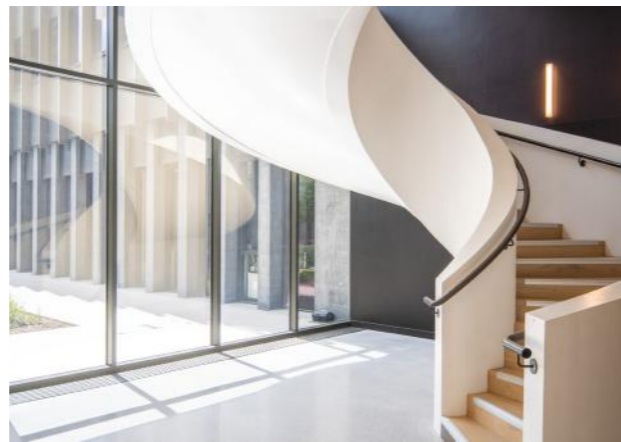


On a typical plateau, there's a central axis comprising meeting spaces for 6 and 12 people, individual bubbles for 2 to 4 people, a shared meeting space, an informal area with a lounge and library, for a touch of home.

5 open-plan workspaces surround this exchange space. Each open space groups around a dozen workstations.

These workspaces are located on the second floor, with a dominant light color scheme for comfort and brightness. In contrast, the central area features dark floor and ceiling tones to encourage exchange and discussion.

Narrative Design



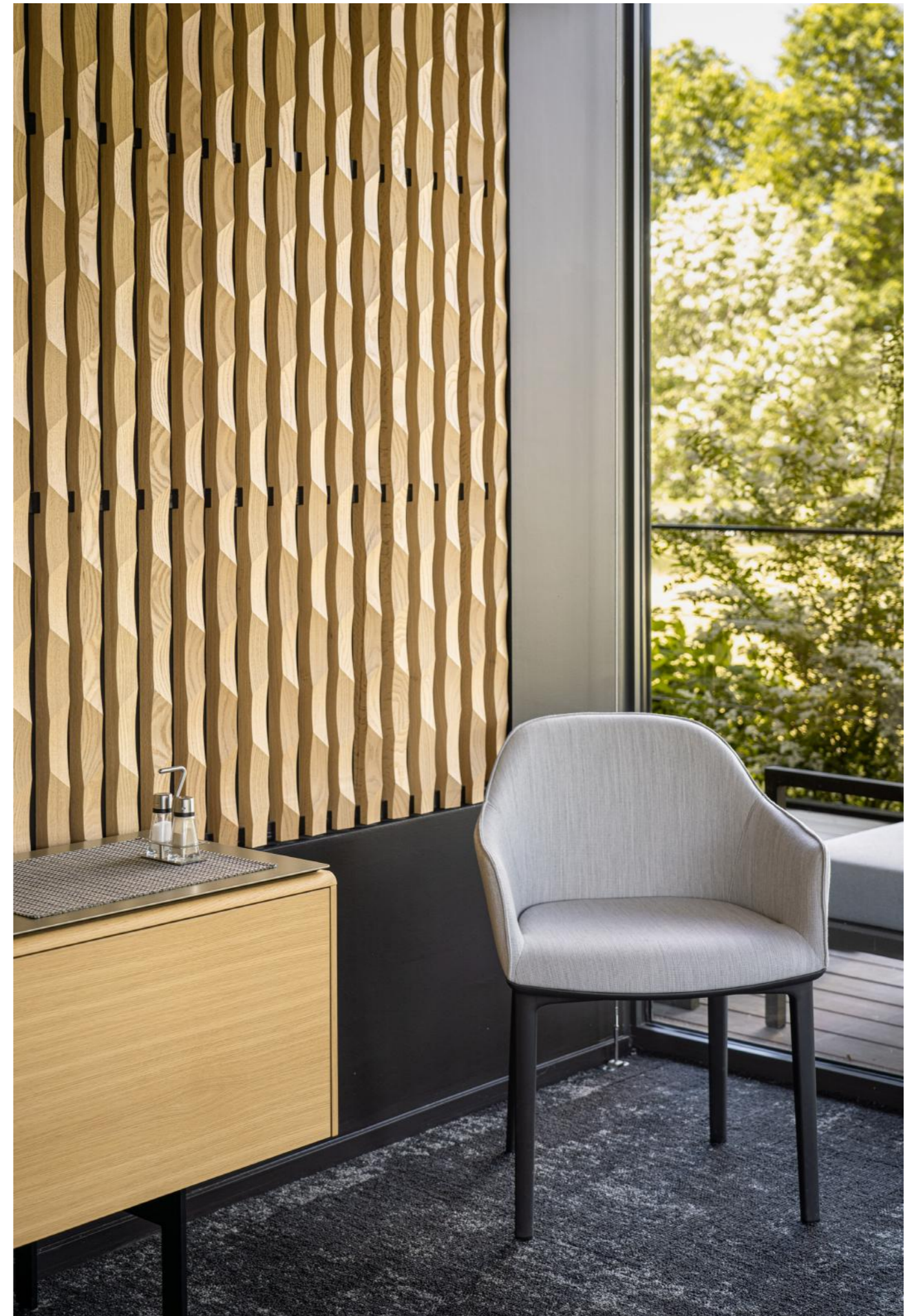
The interior is designed to reflect the Dassault Aviation brand image: sober, chic and evocative of the aeronautical world.

The ground floor is designed as a showroom where the reception lounges are laid out like airline lounges.

The work spaces, located on the upper floors, include modular collaborative spaces where furniture and technical equipment allow total flexibility for the teams. The spirit of the furniture is in the image of the famous Falcon, Dassault's civil aircraft: chic, beautiful but not ostentatious.

The furniture selection includes pieces from Steelcase, Hawaorth, Kinnarpr's, Koenig, mdd, inclass, Norman Copenhagen, Cider, Andreu World, Quinti, Treku...

The spaces are designed to allow total flexibility and to adapt to the innovations imagined by the Dassault teams.



Signage



The signage was integrated as much as possible into the architectural choices and interior fittings while responding to the various uses and needs. The signage treatment was guided by the enhancement of the spaces with the exclusive use of black to provide sobriety and uniqueness.

Particular care was taken with the graphic and technical treatment of the glazing in order to equip the various glazed spaces requiring various types of occultation. the use of certain elements of the new Dassault graphic charter (typography, oblique sign) in the graphic treatment complemented and reinforced the identity and image of the company at the scale of the building.

The signage was also extended to the outside of the building with a set of metal totems in the shape of aeroplane wings to facilitate orientation within the site. The silo car park was given a polychromatic treatment visible from the outside.

Landscape

The study site is located at the interface between the Bordeaux conurbation, clinging to the meanders of the Garonne, and the large forest massif of the Gironde moors. A changing landscape, it is characterised by a strong contrast between the large pine and oak forests and the presence of the industrial and urban node surrounding Mérignac airport.

The detailed study of the forest plant identity enabled us to identify its vocabulary, to draw out its essence and then to reinterpret it according to the uses and challenges of the project. Thus, we proposed to create a strong and structuring landscape framework formed by the trees. It is the framework of the project within which the components of the project are inserted.

The project is an evolving project. The project is an evolving one, and it is therefore a question of designing the founding structural elements for the whole site, which give it an identity but also the flexibility necessary for changes over time.

It is within this mesh that we proposed to find a portion of Landes forest in reference to the landscape context in which the project is inserted. This new forest, composed of local species (Maritime Pine and Pedunculate Oak) structures the whole site and accompanies its successive evolutions.

The walk in the heart of the Parc Forestier, in which the wood predominates, is animated by concrete plots. Sometimes planted with trees, sometimes open, these rest and meeting areas are decorated with custom-made furniture encouraging relaxation or reading. They are made up of large sculptural elements in concrete and wood. These same elements are also placed in the forest, when the trees give way to open, luminous and more intimate clearings.

Our aim was to link the project with its rich context, to bring the plant material into the heart of the site with a constant concern for continuity and landscape integration.



The Forest park

Employees and users of the site can access the restaurant, the brasserie, the work café and other key areas of the site by crossing the central "forest park". Composed of a wide carpet of undergrowth and large trees, the Landes forest, which can be found here in touches on the forecourt, finds its full place and scope.

Within this mass of forest vegetation, the new facilities are finely integrated into the mesh that weaves through the entire site.

The connections between these different centres of interest form the framework of the park. The wide paths, made of a light grey concrete covering, are laid out in the image of strips that fall to the ground: direct, straight and criss-crossed. They offer a resolutely contemporary contrast to the dense pine forest that they cross. With a constant dimension of 3m, they are wide, comfortable and respond to the mineral framework that structures the forecourt.



Dassault aviation

Typology
Offices, R&D & Laboratory

Construction cost
60 M€

Status
Delivered in 2021

Surface area
25 800 m²

Location
Mérignac, France

Allocation mode
Private project management
